

No. A-12		1階平面図	
		1/100	
年 月 日	課 長	副主幹	設 計
山口市建築課	平井	弓場	片山

Figure 1 is an elevation profile of a road section. The horizontal axis represents the road's length, with station markers 11, 13, 14, 15, and 16. The vertical axis represents elevation. The profile shows a series of connected road segments with varying slopes. Key elevation points are marked at 1,500, 5,420, 6,000, 3,470, 6,000, 2,400, 460, 27,570, 10,020, 9,240, and 4,900. Vertical curves are indicated by dashed lines. Labels '附設路幅' (Attached Roadway) and '柱石' (Pier Stone) are placed at specific points along the profile.

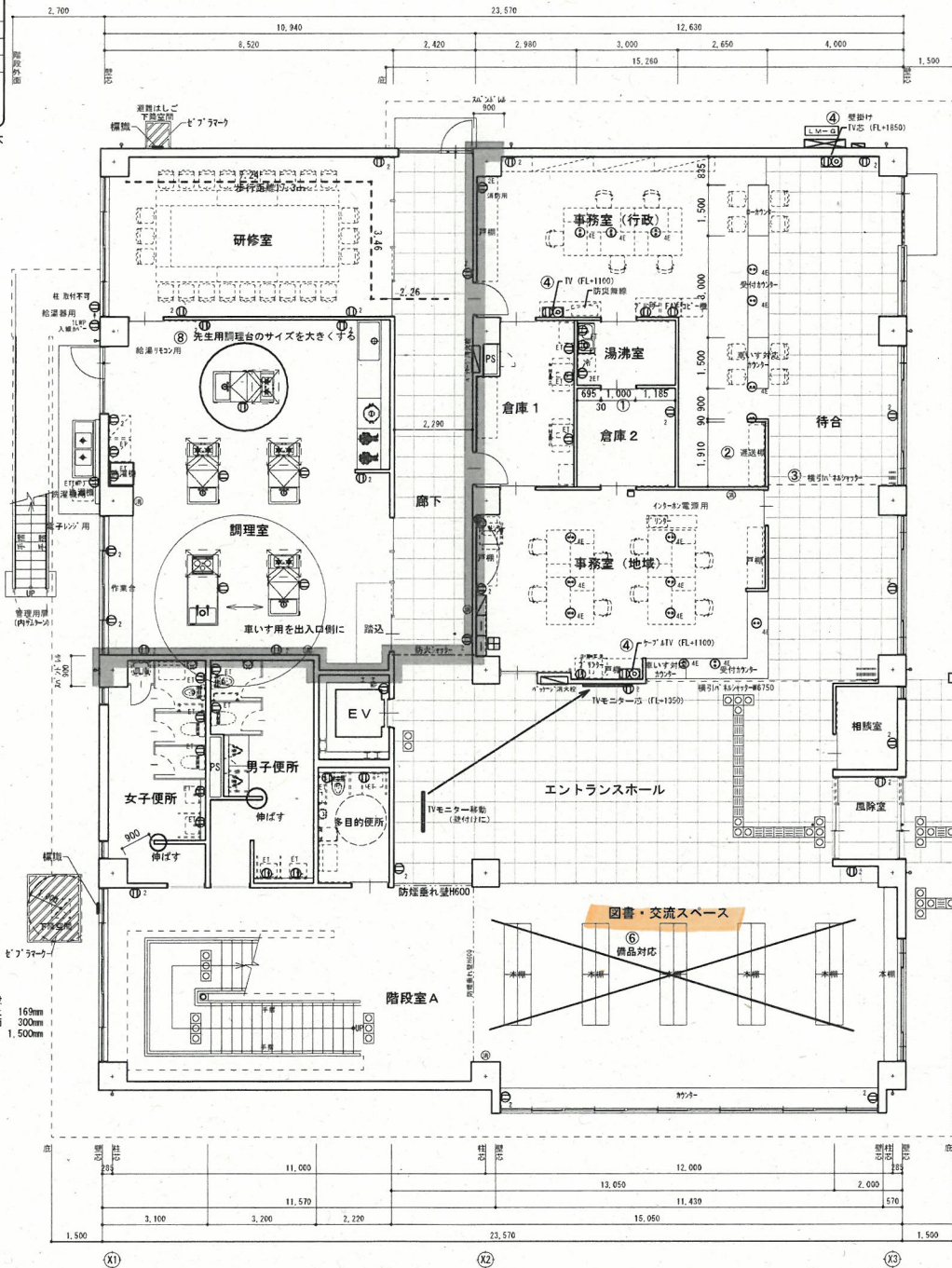


Figure 1 is a schematic diagram of a multi-span continuous beam structure. The beam is supported by four vertical columns. The spans are labeled with lengths: 1.300, 2.000, 2.620, 2.000, 5.720, 2.000, 13.535, 4.925, and 1.500. The total length of the beam is 70.000. The diagram shows the beam profile, supports, and the distribution of spans.

1 階平面図 S=1/100